

CERTIFICATE IN HEALTH CARE WASTE MANAGEMENT

INDIRA GANDHI NATIONAL OPEN UNIVERSITY

OBJECTIVES OF THE PROGRAMME

The objectives of the programme are to

- Sensitize the learners about health care waste and its impact on our health and environment.

- Acquaint the learners about the existing legislation, knowledge and practices regarding infection control and health care waste management practices in South-East Asia Region Countries.

- Equip the learners with skills to manage health care waste effectively and safely.



WHAT STUDENTS WILL LEARN IN THIS PROGRAMME

The students enrolling in the programme will be equipped with the knowledge regarding health care waste management as per Biomedical Waste Management Rules 2016 of Govt of India along with its amendments and WHO guidelines. They should be able to develop the skills to manage health care waste effectively and safely and be able to contribute in this area effectively. The programme also encourages students to take up projects related to management of health care waste in different institutions. The programme also empowers the students to be able to organise training programmes to train other categories of health functionaries

ELIGIBILITY

10 + 2

DURATION

Minimum duration is six months. The programme can be completed within a maximum period of two years from the year of registration

SESSION

January to June and July to December

INDIRA GANDHI NATIONAL OPEN UNIVERSITY



Indira Gandhi National Open University (IGNOU), the largest open university in the world, was established by an act of Indian Parliament in 1985, and started offering academic programmes in 1987. Today, it serves the educational aspirations of about over 3 million students through twenty one schools of studies and a network of 67 regional centres, sub regional centres, 3136 and Learner Support Centres (LSCs). The University offers 257 certificate, diploma, degree and doctoral programmes through a strength of 700 faculty members and academic staff at the headquarters and regional centres and about 60,000 academic counselors drawn from

conventional institutions of higher learning, professionals from various organizations and bodies, among others. IGNOU provides seamless access to sustainable and learner-centric quality education and training to all by using innovative technologies and methodologies and ensures convergence of existing systems for large-scale human resource development, required for promoting integrated national development and global understanding. The University has been in existence for only two decades. In such a short time, the University has contributed significantly to higher education and continuing professional development in the country catering to the education of about 13 per cent of total students enrolled in higher education (and more than 50 per cent of total students in distance education) in the country. As a world leader in distance education, IGNOU was conferred the Centre of Excellence Award in Distance Education in 1993. NAAC has Accredited IGNOU with A++ Grade in 2021 and ranked as Number 1 in Atal Ranking of Institutions on Innovation Achievements in the category "Institute of National Importance, Central University & CFIs (Non-Technical).

SCHOOL OF HEALTH SCIENCES

School of Health Sciences, is one of the 21 schools in IGNOU. It was established in 1991 with the objective of augmenting educational avenues for medical, nursing and paramedical personnel through distance education mode. The various functions of the School are planning, developing and launching of Post Doctoral Degree, Diploma And Certificate level Programmes for various categories of Health Professionals; Health Awareness programmes for the general public and conducting research on health issues. The School is offering a number of Medical, Nursing, Paramedical, Competency Based and Practical Oriented Programmes. Some of the important areas in which the programmes have been developed for doctors are Maternal and Child Health, Geriatric Medicine, HIV Medicine, Dialysis Medicine, CBRNE. Programmes being offered for nurses include Ph.D, Post Basic B.Sc nursing, Nursing Administration, Critical Care, Maternal and Child Health and New Born and Infant care. The School also has programmes for people



working in the health sector other than nurses and doctors like Certificate in Home Based Healthcare, Certificate in Health Care Waste Management, BPCCHN Programme, Certificate programme in General Duty Assistance, Geriatric Care Assistance, Phlebotomy Assistance and Home Health Assistance. All these programmes are practical based and help to sensitize and equip the learners with competencies in the area specific to the respective programmes to manage various problems in the health sector. The programmes have been developed and supported by various National and International organization like Government Departments, Ministries, Councils and reputed organizations like WHO, UNICEF, INMAS, DRDO, National Board of Examination, MoHFW, NHIFW & ICMR through collaborations.

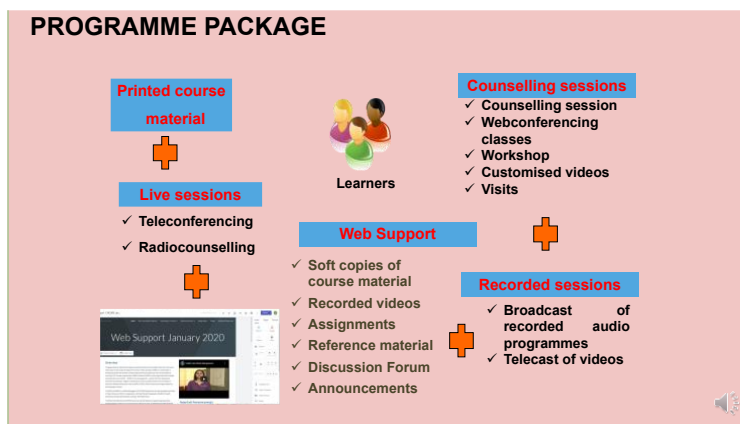
ABOUT CERTIFICATE IN HEALTH CARE WASTE MANAGEMENT PROGRAMME

The Certificate in Health Care Waste Management (CHCWM) programme has been developed in collaboration with WHO, South East Asia Region, to increase essential knowledge and skills of the learners, for the management of Health Care Waste and to equip them to manage it effectively and safely so as to safeguard themselves and the community against adverse health impact of the waste. The programme is targeted at professionals and paraprofessionals working in the health care facilities and those involved in the management of Health Care Waste. The Bio-Medical Waste Management (BHM) Rules 2016 have been notified in March 2016 and amended in March 2018. The course material of this programme is in line with the Safe Management Of Wastes From Health Care Activities WHO document, 2014 and Bio Medical Waste Management Rules, 2016, as amended.

PROGRAM PACKAGE

The programme package consists of Self Instructional Material (SIM) in the form of booklets called blocks, videos, web conferencing classes, and term end theory and practical examinations.

The theory study of the course content is augmented with tools like SIMs, live interaction during live web conferencing sessions for interaction with faculty and subject experts, Q&A through e-mails & uploaded videos, apart from suggested readings.



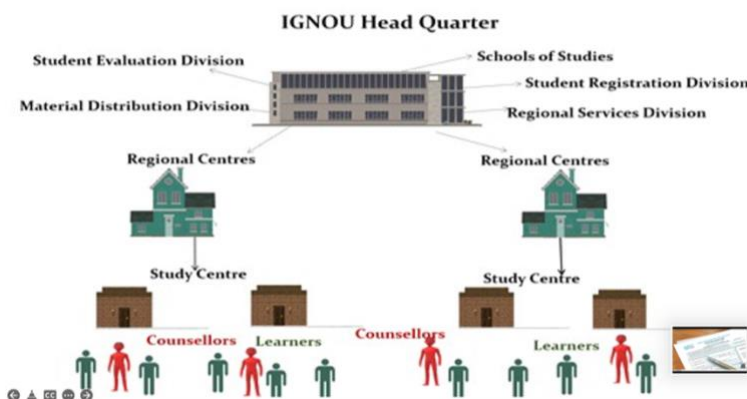
Those students choosing workshop as their elective are required to undertake activities related to health care waste management in their own workplace and record the same in log books. They are also required to undergo a 16 hours workshop which may be held face to face or through virtual mode as decided. Log books are the practical record books. These are evaluated periodically and are pre-requisite for clearing the course.

All the resources and the important announcements are placed on a dedicated web portal platform which can be accessed anytime anywhere by the students. Those students opting for a project are required to undertake a two credits project which is assessed by their academic counsellors. Internal assessments in the form of assignments and term end examination are part of the programme package.

IMPLEMENTATION PLAN

The programme is implemented through a network of Learner Support Centres (LSC) all over the country. A team of trained teachers called academic counsellors have been identified and trained for providing academic counselling assignment and project evaluation.

The administrative control is through the Regional Centres (RCs) of IGNOU located usually at state capitals in India and the School of Health Sciences (SOHS) located at the IGNOU Headquarters, Delhi, India.



EVALUATION

The Students have to undertake both continuous and term end assessment to be declared successful. Each component has to be cleared separately. The continuous assessments is in the form of assignments and the term end assessment is the final examination after the completion of the programme. There is one theory paper for each of the core and elective theory courses. There is no term end exam for the workshop or the project. Projects are evaluated and have to be cleared with a minimum 40 % marks. The pre-workshop, workshop and the post-workshop components of the workshop course have a weightage of 30%, 40% and 30% respectively. The minimum pass marks for all the components is 40% in each component individually. Successful candidates are awarded a certificate.



Projects are evaluated and have to be cleared with a minimum 40 % marks. The pre-workshop, workshop and the post-workshop components of the workshop course have a weightage of 30%, 40% and 30% respectively. The minimum pass marks for all the components is 40% in each component individually. Successful candidates are awarded a certificate.

DETAILED PROGRAM DESIGN

There are two compulsory courses (BHM-101 and BHM -102) of six credits each and eight optional (elective/project/practical) courses of two credits each. A student is required to take the two compulsory courses and any two of the optional courses.

Course Code	Course Title	Nature of Course	Assignments
BHM-101	Fundamentals: Environment and Health, Health Care Waste Management Regulations	Theory	1
BHM-102	Health Care Waste Management : Concepts, Technologies and Training	Theory	1
BHME-101	Inter-relationship between health and environment	Elective	1
BHME-102	Worker safety and patient safety	Elective	1
BHME-103	Current Status of Health Care Waste Management and Legislation in the Regional Countries	Elective	1
BHME-104	Managerial and Systems approach	Elective	1
BHME-105	Special considerations of Waste Management	Elective	1
BHME-106	Administrative and Legal Aspects of Waste Management	Elective	1

BHMP-101	Project	Project	Project
BHML-101	Workshop	Practical	3 log books

HOW TO APPLY

ADMISSION

Admission is through the online application form available at the Samarth portal on IGNOU website www.ignou.ac.in. Advertisement and application forms are available on the website in the month of November/December for the January session and May/June for the July session.



CONTACT US

Prof. Ruchika Kuba

Programme Co-ordinator CHCWM

School of Health Sciences

Indira Gandhi National

Open University

Maidan Garhi,

New Delhi – 110068

E-mail: rkuba@ignou.ac.in

Telephone: 011-29533078

USEFUL LINK

About the programme

<http://www.ignou.ac.in/ignou/aboutignou/school/sohs/programmes/detail/230/2>



Video for the programme

https://youtu.be/-118KdE-v_Y



