

# **Certificate in Maternal And Child Health Nursing (CMCHN)**

## **Information Brochure**



**School of Health Sciences  
Indira Gandhi National Open University  
Maidan Garhi, New Delhi**

**INDIRA GANDHI NATIONAL OPEN UNIVERSITY**  
Indira Gandhi National Open University (IGNOU) was established in September, 1985 by an Act of Parliament with a view to democratize education so that it covers large segments of population, vocations and professions. It has achieved significant results in providing access to higher education to a large number of students across the length and breadth of the country. The Primary emphasis is on innovation, flexibility and cost effectiveness. It has national jurisdiction and has the authority to provide degree, diplomas and certificates all over the country. The Commonwealth of Learning conferred the honour of "Centre of Excellence in Distance Education" on it in 1993 for producing high quality course materials.

### **SCHOOL OF HEALTH SCIENCE**

The School of Health Sciences was set up in 1991 with the objective of augmenting educational avenues and providing in-service training to medical, nursing, paramedical and allied personnel through the distance education mode.

The School is pioneer in developing innovative competency based programmed in various disciplines of Health Sciences. Hands-on training is provided through diversified approaches of a network of medical colleges, nursing colleges, district level hospitals and community health centres and NGO's. School has also developed socially useful programs

The main functions of the school are as follows:-

- Planning, developing and launching of Degree, Diploma and Certificate level programmes/course for various Categories of health professionals.
- Health related awareness courses for the general public
- Conducting research on health related issues.

# Certificate in Maternal and Child Health Nursing (CMCHN)

## Certificate in Maternal Child Health Nursing (CMCHN)

The Certificate in Maternal and Child Health Nursing is six months continuing nursing education programme of 16 credits to update the knowledge, skills and render effective health care of health care providers in reproductive and child health. The programme is meant for ANM/FHW/PHN/Health supervisors and In-service nursing professionals (RNRM).

Note- This is continuing nursing education programme. As per Indian Nursing Council letter No. F.No. 22-203/CNE/2018-INC dated 27/11/2020, 55 CNE credit hours/11 credits considered while renewal of registration as RNRM approved by INC

### Objectives:

The broad objectives of this programme are to:

- Update the knowledge and skills of health care providers in reproductive and child health.
- Enable the health care providers to render effective health care to mother and child.

### Target Group

Nursing Professionals (RNRM) of all categories

### Eligibility Criteria

#### Minimum qualification

- Nursing professionals (RNRM) with diploma in general nursing and midwifery (GNM) or above
- Health worker (F)/ANM/Health Supervisor female/LHV

**Duration:** Minimum **six** months  
Maximum **two** years

**Medium:** English

**Programme Fee:** Rs. 6600/- per student

**Programme Design:** The programme consists of 6 credits in Theory and 10 credits in Practical as given below:

**Theory Course - Maternal and Child Health Care –BNS-117**

#### Block 1: Reproductive Health

Unit 1: Concept of Health and Primary Health Care  
Unit 2: National Health Programmes in MCH  
Unit 3: Introduction to Reproductive and Child Health  
Unit 4: Sexuality, Fertility and Infertility  
Unit 5: Sexually Transmitted Diseases and Human Immuno Deficiency Syndrome and Acquired Immuno Deficiency Syndrome

#### Block 2: Essential Maternal Care

Unit 1: Review of Reproductive System  
Unit 2: Antenatal Care and Normal Pregnancy  
Unit 3: Intranatal Care: Management of Normal Labour  
Unit 4: Postnatal Care  
Unit 5: High Risk Pregnancies

#### Block 3: Essential Newborn Care and Child Health

Unit 1: Essential Care of Newborn and Management of Low Birth Weight Baby  
Unit 2: Vaccine Preventable Diseases and Immunization  
Unit 3: Growth and Development  
Unit 4: Nutrition for Children and nutritional deficiency diseases

#### Block 4: Integrated Management of Neonatal and Childhood Illness

Unit 1: Assess and Classify Sick Young Infant  
Unit 2: Identify Treatment and Treat Sick Young Infant  
Unit 3: Assess and Classify Sick Child  
Unit 4: Identify Treatment and Treat the Sick Child  
Unit 5: Counsel the Feeding

#### Block 5: Communication Skills Supervision and training

Unit 1: Principles, Methods Media of Communication and Information Education and communication  
Unit 2: Social Mobilisation Skills, Campaigns and Camps  
Unit 3: Leadership Skill  
Unit 4: Principal and concepts of Supervision and training  
Unit 5: Monitoring and Evaluation

#### Block 6: Management of Sub-centre

Unit 1: Concept of Management  
Unit 2: Management of Resources  
Unit 3: Problem Solving and Decision Making  
Unit 4: Work Plan at Sub-centre  
Unit 5: Health Management Information System  
Unit 6: Management of Records in Sub-centre

### Practical Course : Practices and Procedures in Maternal and Child Health Care -BNSL-117

#### Section 1: Reproductive Health

Practical 1: Assessment of Health Status of Women  
Practical 2: Identification of Couples with Infertility  
Practical 3: Identification and Prevention of Reproductive Tract Infections and HIV/AIDS Skill

#### Section 2: Maternal Care

Practical 4: Antenatal Examination and Care  
Practical 5: Monitoring Labour and Partograph  
Practical 6: Postnatal Examination and Care  
Practical 7: Identification and Management of Obstetrical Emergencies  
Practical 8: Techniques in Family Planning

#### Section 3: New born and Child Care

Practical 9: Resuscitation  
Practical 10: Examination and Care of Newborn  
Practical 11: Immunization Techniques and Maintenance of Cold Chain and Monitoring  
Practical 12: Assessment and Recording of Growth and Development  
Practical 13: Menu Planning for Children of Various Age Groups  
Practical 14: Identification of Deficiency Diseases  
Practical 15: Adolescent Health Counselling

#### Section 4: Practical Aspects of Integrated Management of Neonatal and Childhood Illness

Practical 16: Assessment Techniques in Young Infant and Sick Child  
Practical 17: Treatment Techniques in Young Infant and Sick Child

Practical 18: Feeding Techniques

#### Section 5: Management of MCH Services at Periphery

Practical 19: Diary Writing  
Practical 20: Sub-centre Action Plan  
Practical 21: Organizing Community health Committee meeting and Mahila Mandals  
Practical 22: Organizing and Conducting MCH Clinics  
Practical 23: Records and Reports  
Section 6: IMNCI Chart book and Workbook

Unit 5: Accidents and Hazards among Children  
Unit 6: Adolescent Health

## **Certificate in Maternal Child Health Nursing (CMCHN)**

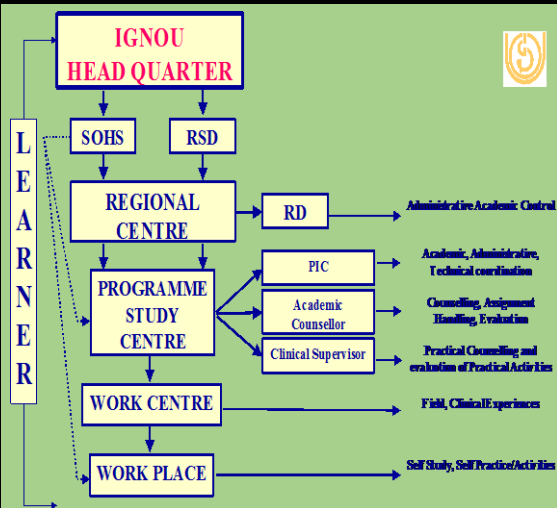
## PROGRAMME PACKAGE

Programme is delivered with multimedia package consisting of print material in the form of blocks, A.V. Aids, teleconferencing, Radio Broadcast, contact sessions at study center , practical sessions.



## IMPLEMENTATION PLAN

The programme is implemented through Alternate strategy using web support, Gyan Dashan, Gyan Vani, A-V Aids and social media. For hands on training learners are placed in hospitals, Community Health Centers/ Primary Health Centres and community fields. Learners can do self and supervised activities at their own work place and maintain the record in workbook to be certified by the mentor and send to programme coordinator/Nodal centre.



## EVALUATION

Evaluation is through Term End Examination for theory in June and December every year, Assignments/Workbook (Self and Supervised Activities) in the form of pdf to be submitted by students in mail provided, practical Examination to be held at the end of the courses through online mode.

### Programme Co-coordinator

**Dr. Reeta Devi**

Asst. Prof.(Sl.Grade) SOHS

Email: [reetadevi@ignou.ac.in](mailto:reetadevi@ignou.ac.in)

[cmchn@ignou.ac.in](mailto:cmchn@ignou.ac.in)

Phone :011-29572807

For further information, contact :

**Prof. (Dr.) Ruchika Kuba**

Director

School of Health Sciences

Indira Gandhi National Open University

Maidan Garhi, New Delhi-110068

Phone :011-29537078(Director),

Email.: [sohs@ignou.ac.in](mailto:sohs@ignou.ac.in)

[www.ignou.ac.in](http://www.ignou.ac.in)