

*Certificate in Community Health
(CCH)*

I
G
N
O
U

Information Brochure



School of Health Sciences
Indira Gandhi National Open University

MINISTRY OF HEALTH AND FAMILY WELFARE (NATIONAL HEALTH MISSION)

Write-up on Bridge Course for Nurses in Community Health

The Sustainable Development Goals include achievement of Universal Health Coverage (UHC) including financial risk protection and access to quality essential health-care services. Provision of Comprehensive Primary Health Care is a critical component of UHC. Government of India has decided to strengthen the Sub Health Centres (SHCs) as Health & Wellness Centres (HWCs) with a primary health care team lead by a mid-level health care provider to provide Comprehensive Primary Health Care in close proximity to the community. The roll-out of Bridge Programme for Staff Nurses is a step towards skilling health human resources to perform the role of team leader at HWCs, armed with appropriate knowledge and competencies to deliver comprehensive primary health care services and implement public health programmes. It is expected that availability of Comprehensive Primary Health Care in close proximity to the community will reduce fragmentation of care, ensure healthier population and thereby reduce Out of Pocket Expenditure on health and also reduce pressure on secondary and tertiary care facilities.

The certificate Programmes to be rolled out by IGNOU includes theory classes as well as hands-on practicum training. The programme will also provide exposure to the candidates through community visits for field based assignments and learning.



INDIRA GANDHI NATIONAL OPEN UNIVERSITY

The Indira Gandhi National Open University (IGNOU), established by an Act of Parliament in 1985, has continuously striven to build an inclusive knowledge society through inclusive education. It has tried to increase the Gross Enrollment Ratio (GER) by offering high-quality teaching through the Open and Distance Learning (ODL) mode.

IGNOU provides seamless access to sustainable and learner-centric quality education, skill upgradation and training by using innovative technologies and methodologies and ensures convergence of existing systems for large scale human resource development required for promoting integrated national development and global understanding.



SCHOOL OF HEALTH SCIENCES

The School of Health Sciences was set up in 1991 with the objective of augmenting educational avenues and providing in-service training to medical, nursing, paramedical and allied personnel through the distance education mode.

The School is pioneer in developing competency-based programmes in various disciplines of Health Sciences. Hands-on training is provided by diversified approaches through a network of medical colleges, nursing colleges, district level hospitals and community health centres and NGO's. The programmes in nursing and health sciences are being developed so as to revolutionize career opportunities available to nursing and medical personnel. The programmes of SOHS have been developed and supported by various national and international organizations like Government Departments, Ministries, Councils and reputed organizations like Indian Nursing Council, MoHFW, WHO, UNICEF, NIHFW, ICMR, and so on through collaborations.

The main functions of the School are as follows:

- Planning, developing and launching of degree, diploma and certificate level programmes/courses for various categories of health professionals.
- Health related awareness courses for the public.
- Conducting research on health related issues.

CERTIFICATE IN COMMUNITY HEALTH (CCH)

Ministry of Health and Family Welfare (MoHFW) GOI approached IGNOU for developing a Bridge Programme (Certificate) in Community Health for Nurses (BPCCHN). An MOU was signed with Ministry of Health and Family Welfare (MoHFW) on 16th March, 2016. Funding for development of programme has been provided by MOHFW to IGNOU. The programme aims at improving the knowledge, skills and competencies of in-service registered nurses (RNRM) to enable them to serve as competent human resource essential for strengthening the primary health care services at peripheral level. The development of this programme has been undertaken with the involvement of nursing experts, medical experts, social scientists and educationists from various related disciplines.



Further the amendment in MOU on the request of MoHFW, GOI to include Ayurveda Graduates in the target group and Nomenclature modified from BPCCHN to CCH on 21st July 2018.

OBJECTIVES

The main objectives of the programme are as follows:

- Enhance knowledge and skill of learners in providing community health care services.
- Develop competencies in dealing with issues of public health.
- Provide comprehensive primary care based on protocols appropriate to subcentre level.
- Perform preventive and promotive actions for improving community health.
- Perform common laboratory investigations.
- Provide treatment based on protocols as appropriate to subcentre level.

Academic Session	:	January to June cycle and July to December cycle every year
Target Group	:	Registered Nurse and Registered Midwife (RN/RM) /BAMS
Eligibility	:	Diploma in General Nursing and Midwifery (GNM) and or BSc. Nursing (Initially In-service nurses) / BAMS (Ayurveda graduate)
Programme Fee	:	Rs. 15,000/- Cycle (subject to change)
Medium of Instruction	:	English initially
Number of Seats	:	30-60 per Programme Study Centre
Admission/Selection Procedure	:	Sponsorship of the candidates (fulfilling eligibility criteria) by MoHFW through States NHM
Duration of Programme	:	Minimum: 6 Months Maximum: 2 years
Programme Package	:	The package consists of self-instructional material in form of booklets/ blocks, audio-video programmes and teleconferencing

The minimum duration of the programme is six months. However, the students are given a maximum period of two years to complete the programme from the date of registration.

CREDIT SYSTEM

In IGNOU, the study hours are measured in credit system. One credit is equivalent to 30 learning hours. For example, 18 credits of Certificate in Community Health programme means an average student will be required to give (18x30=540) hours of input for this programme. While undergoing the programme, students would be involving themselves in the activities like reading self instructional Material, attending counseling sessions at Programme Study centres, and practical hands on training in District Hospitals, Community Health Centres (CHCs), Primary Health Centres (PHCs) and Sub-Centres (SC) etc. writing assignments, viewing audio video programmes listening Interactive Radio counseling (IRC) and Tele-Conferencing (TC).

Courses	Course Code	Course Title	Credits	Hours	Counseling Hours	Self Study Hours	
A.	Theory	BNS-041	Foundation of Community Health	4	120	60	60
		BNS-042	Primary Health Care in Common Conditions	4	120	60	60
B.	Practical	BNSL-043	Public Health and Primary Health Care Skills	10	300	300	--
			Total	18	540	420	120

INSTRUCTIONAL APPROACH

Programme is delivered through multimedia package consisting of print material in the form of blocks, A.V. Aids, Teleconferencing, Radio Broadcast, contact sessions and practical sessions at programme study centre. There are two theory courses and one practical course.

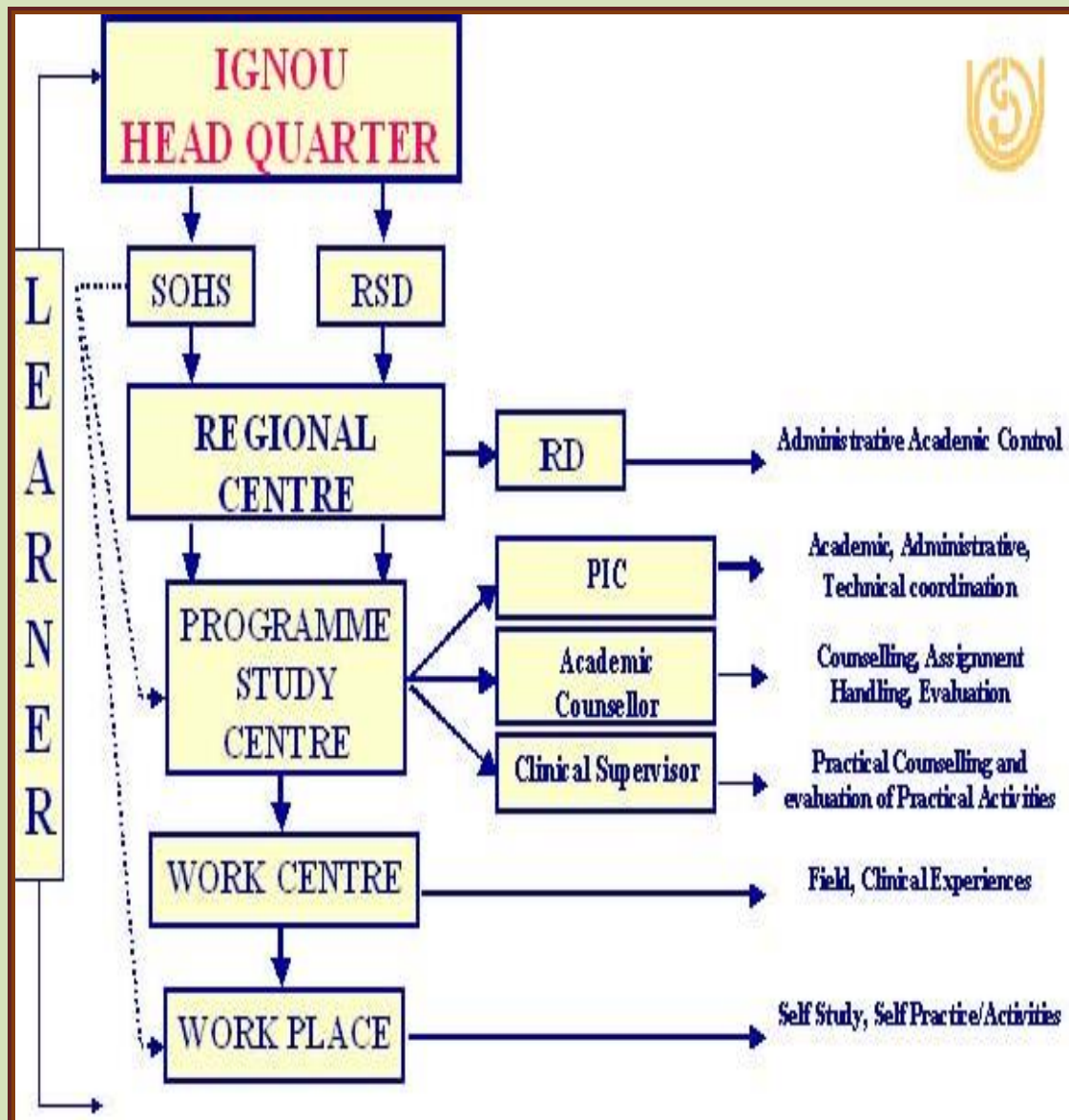


EVALUATION

There is continuous and Term End Evaluation for theory and practical courses. Continuous Evaluation for theory is done through assignments and practical will be through Log Book, Case Study presentation and activities. There is a Term End Examination (TEE) for two theory courses and Practical Examination for Practical course. University conducts Term End Examination for theory in the month of June and December every year. The minimum qualifying marks in continuous and term end evaluation is 50% separately in each component of evaluation. Also, the pattern of TEE modified from subjective type question papers to objective type (70 MCQs) of 2 hours durations for both theory courses from June 2020 onwards.

IMPLEMENTATION PLAN

Programme is implemented through a network of Programme Study Centres located in District Hospitals/ College of Nursing. A team of Teachers/Academic Counsellors trained to take contact sessions at study centers. In this programme theory contact sessions of 120 hours (BNS-041 and BNS-042) in 20 days and 300 hours for practical contact sessions i.e. BNSL-043 for 50 days have been planned. The criteria for Programme incharges (PIC)/Academic Counsellors include Medical and Nursing professionals with post graduate qualification in various specialty areas, preferably having two years of teaching experience.



CERTIFICATE IN COMMUNITY HEALTH (CCH) PROGRAMME STRUCTURE

<i>THEORY COURSES</i>	
<i>Course Code</i>	<i>Course Title</i>
BNS-041	Foundations of Community Health
Block 1	Introduction to Public Health and Epidemiology
Block 2	Nutrition
Block 3	Communicable Diseases and National Health Programme
Block 4	Non-Communicable Diseases and National Health Programmes
Block 5	Communication Management and Supervision
BNS-042	Primary Health Care in Common Conditions
Block 1	Management of Common Conditions and Emergencies including First Aid
Block 2	Maternal Health
Block 3	Reproductive Health and Adolescent Health
Block 4	New Born and Child Health Care
Block 5	Overview of Common Surgical conditions Referral and follow up care
Block 6	Essential Drugs
<i>PRACTICAL COURSE</i>	
BNSL-043	Public Health and Primary Health Care Skills
Block 1	Public Health skills
Block 2	General Skills and Laboratory Skills
Block 3	Skills for Management of Common Conditions and Emergencies
Block 4	Maternal Health Skills
Block 5	Reproductive and Adolescent Health Skills
Block 6	Newborn and Child Health Skills

Programme Co-ordinator

Dr. Reeta Devi

Asst. Prof. (Sl. Grade)

School of Health Sciences

Email: reetadevi@ignou.ac.in

bridgecoursen@ignou.ac.in

Phone: 011-29572807

For Further information, contact:

Prof. (Dr.) Ruchika Kuba

Director, School of Health Sciences

Indira Gandhi National Open University

Maidan Garhi, New Delhi – 110 068

Phone: 011-29537078 (Direct),

E-mail: directorsohs@ignou.ac.in, sohs@ignou.ac.in

Website: www.ignou.ac.in

Some Important links : www.ignou.ac.in
www.onlineadmission.ignou.ac.in
www.ignouonline.ac.in