

## ELIGIBILITY

### REQUIREMENTS:

The general eligibility requirement for all Master's Degree programmes as laid down by the university, i.e. students having a Bachelor's degree with minimum 50% aggregate.

## LEARNER SUPPORT

### MECHANISMS:

Learners will be provided with academic support through counseling sessions, teleconferencing, radio counseling, television broadcasts, e-mail, e- groups and other appropriate blended learning methodologies.

## EVALUATION

### METHODOLOGY:

Students will be evaluated on the basis of assignments and term-end exams for each course. Requirements for earning the degree may also include completion of project work (depending on the specialization chosen).

## ELIGIBILITY FOR

### ADMISSION:

Graduation in any discipline with minimum 50% aggregate.

Medium of Instruction: English

Minimum Duration of Programme: 2 Years

Maximum Duration of Programme: 5 Years

Admission: On annual basis in July cycle only

*For more information, please contact:*

## PROGRAMME

### COORDINATORS:

Prof. Anu Aneja

School of Gender and Development Studies,  
IGNOU

Ph: 011-29571614, email: anuaneja@ignou.ac.in

Dr. Nilima Srivastava

School of Gender and Development Studies,  
IGNOU

Ph: 011-29571612,

email: nilimasrivastav@ignou.ac.in

Director

School of Gender and Development Studies,  
Block 15B, IGNOU Head quarters, Maidan  
Garhi, New Delhi --110068

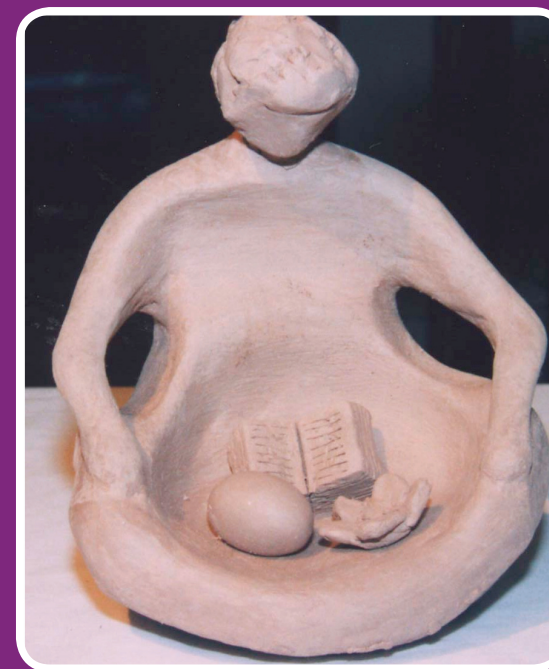
Ph.No.: 011-64788934; 29571611



School of Gender and Development Studies  
Indira Gandhi National Open University  
Maidan Garhi, New Delhi-110068



## MASTER OF ARTS IN WOMEN'S AND GENDER STUDIES (Distance Mode)



School of Gender and Development Studies  
Indira Gandhi National Open University  
New Delhi

# MASTER OF ARTS IN WOMEN'S AND GENDER STUDIES

*The Master's degree programme in Women's & Gender Studies is on offer in distance education mode from July 2013.*

*The programme has been launched in modular form with an exit point at the PG Diploma level after successful completion of coursework prescribed for first two semesters. The first year curriculum will consist of core foundation courses in Women's & Gender Studies.*

*The MA degree will equip students with the ability to deconstruct the complex power hierarchies and relationships operating in society, from a gender perspective. The focal areas for the programme include Concepts, Theories & Movements in Women's & Gender Studies; Gender and Power; Gender through Arts and Media; Bodies & Sexualities, Research Methods, Women and Social Structure, Economy and Political Process; Gender, Literature, Culture, Postmodernism, Life Narratives, the Gendered Nation.*

## COURSE STRUCTURE

The course structure with codes and credits for the MA in Women's & Gender Studies are as follows:

### Semester I

Course Codes	Courses	Credits
MWG – 001	Theories of Women's and Gender Studies	8
MWG – 002	Gender and Power	8

### Semester II

Course Codes	Courses	Credits
MWG – 003	Constructing Gender Through Arts and Media	8
MWG – 004	Gendered Bodies	8

### Semester III

#### (Gender, Literature Culture Specialization)

Course Codes	Courses	Credits
MWG – 005	Research Methods	8
MWG – 006	Gendered Nation	8

OR

#### (Women's Studies Specialization)

Course Codes	Courses	Credits
MWG – 005	Research Methods	8
MWG – 009	Women & Social Structure	8

### Semester IV

#### (Gender, Literature Culture Specialization)

Course Codes	Courses	Credits
MWG - 007	Postmodernism & Gender	8
MWG – 008	Gender & Life Narratives	8

OR

#### (Women's Studies Specialization)

Course Codes	Courses	Credits
MWG - 010	Women and Political Process	8
MWG - 011	Women in the Economy	8

**Project work for two credits**

## Career Opportunities

Students completing the Master's degree will be able to pursue careers in the areas of higher studies, teaching and research programmes, advocacy through national and international non-profit organizations/institutions, Government as well as non-government organizations/institutions, international organizations and careers in teaching, writing, editing, mass media, or opt for other appropriate career options.

## TARGET GROUPS

The programme is aimed at students with a Bachelor's degree in any discipline wishing to pursue higher studies in the area of women's and gender studies. Working professionals and adult learners would also find the programme useful for knowledge enhancement and skill building in the area of women's and gender studies, and for career advancement through acquired knowledge in these areas.

## ADMISSION CYCLE

Due to the progressive nature of the programme, students are required to complete core foundation courses to be offered sequentially in semester 1 and semester 2 before proceeding further. Admissions for all students will be done on annual basis in July cycle only.